

bRF.. - Fissacavi autobloccanti completi di selle calibrate, in acciaio inox

Fissacavi in acciaio inox adatti al fissaggio di cavi e tubi di grande diametro. Particolarmente raccomandati per cavi coassiali del broadcasting.

Versioni:

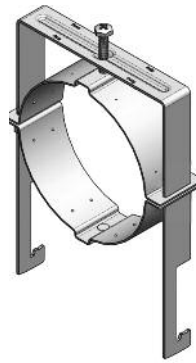
- ① **bRF..A5** aggancio ad angolare 50x50 mm
- ② **bRF..C** aggancio su profilato **PCI 40x22**
- ③ **bRF..M** aggancio su piatto 5-25 e tondo 8-25

Impiego:

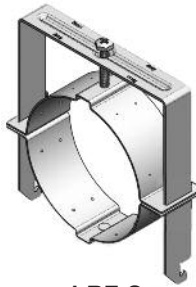
Per 1 cavo o tubo diametro = D

Materiale:

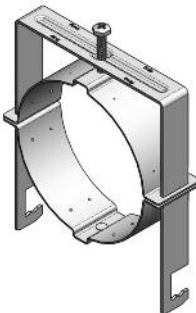
Acciaio INOX AISI 430.



bRF A5..



bRF C..



bRF M..

bRF.. - Selbstsichernde Edelstahlschellen mit kalibrierten Wannen

Edelstahlschellen für die Verlegung von grossen Kabel- und Rohrdurchmesser. Besonders empfehlbar für Koaxkabeln in Broadcasting Anlagen.

Versionen:

- ① **bRF..A5** Montage auf Winkleisen 50x50 mm
- ② **bRF..C** Montage auf **C-Profileschienen 40x22**
- ③ **bRF..M** Montage auf Flach- 5-25 und Rundmat. 8-25 mm

Einsatz:

Für 1 Kabel oder Rohr, Durchmesser = D

Material:

Stahl AISI 430 (V2A).

bRF.. - Self-Locking Cable Clamps complete with Calibrated Stainless Steel Saddles

Stainless Steel Clamps for large Cable and Pipe diameters. Recommended for coax cables in broadcasting installations.

Versions:

- ① **bRF..A5** hooking on flat 50x50 mm angular
- ② **bRF..C** hooking on **PCI 40x22** section
- ③ **bRF..M** hooking on flat 5-25 and rond 8-25

Use:

For 1 cable or tube diam. = D

Material:

AISI 430 Stainless steel.

bRF.. - Attaches inox auto-arrêtantes Avec garnitures calibrées d'acier

Attaches de acier inox pour câble et tuyaux de grandes diamètres. Raccmandé pour l'installation de cables coaxiales de broadcasting.

Versions:

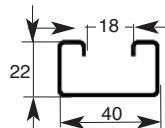
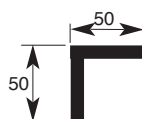
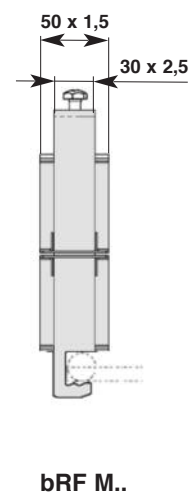
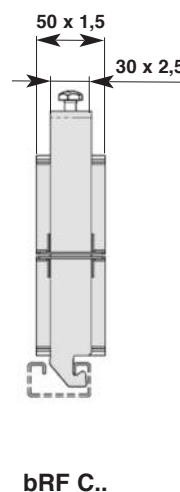
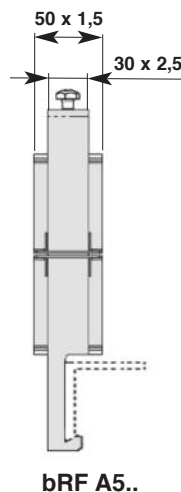
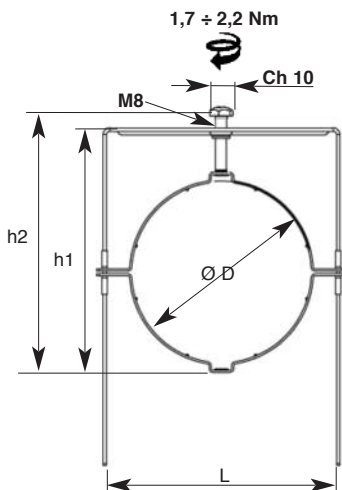
- ① **bRF..A5** accrochage sur cornière 50x50 mm
- ② **bRF..C** accrochage sur profile **PCI 40x22**
- ③ **bRF..M** accrochage sur plat 5-25 et rond 8-25 mm

Emploi:

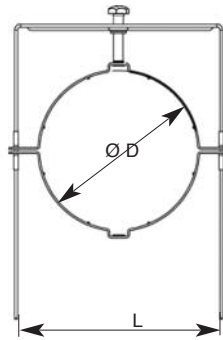
Pour 1 câble ou tuyau diam. = D

Matériel:

Inox AISI 430 .



bRF..A - bRF..C - bRF..M
Fissacavi autobloccanti
con selle calibrate in acciaio inox



bRF..A - bRF..C - bRF..M
Selbstsichernde Kabelschellen
mit kalibrierten Edelstahlwannen

bRF..A - bRF..C - bRF..M
Self-Locking Cable Clamps
with Stainless Steel Calibrated Saddles

bRF..A - bRF..C - bRF..M
Attaches auto-arrêtantes
avec garnitures calibrées en acier inox



Figura Figure Abbildung Figure	Codice Code Artikel Nr. Code	Articolo Article Artikel Article	per/for Für/pour		Ø D	L	h1	h2			g	
			RFS	Andrew								
 bRF A5	61 1500 0090	bRF A5/ 1x90	3.1/8" HCA400	-	89 - 91	137	153	150	10		1555	
	61 1500 0102	bRF A5/ 1x102	-	4" HJ11	101 - 103	137	153	162	10		1597	
	61 1500 0115	bRF A5/ 1x115	4.1/8" HCA495	-	114 - 116	137	153	175	10		1649	
	61 1500 0132	bRF A5/ 1x132	-	5" HJ9 HJ9HP	131 - 134	169	180	192	10		1974	
	61 1500 0147	bRF A5/ 1x147	5" HCA550	-	146 - 148	169	180	207	10		2030	
	61 1500 0169	bRF A5/ 1x169	6.1/8" HCA618	-	168 - 170	191	207	229	10		2284	
 bRF C	61 1501 0090	bRF C/ 1x90	3.1/8" HCA400	-	89 - 91	137	141	150	10		1520	
	61 1501 0102	bRF C/ 1x102	-	4" HJ11	101 - 103	137	141	162	10		1565	
	61 1501 0115	bRF C/ 1x115	4.1/8" HCA495	-	114 - 116	137	141	175	10		1615	
	61 1501 0132	bRF C/ 1x132	-	5" HJ9 HJ9HP	131 - 134	169	181	192	10		1939	
	61 1501 0147	bRF C/ 1x147	5" HCA550	-	146 - 148	169	181	207	10		1996	
	61 1501 0169	bRF C/ 1x169	6.1/8" HCA618	-	168 - 170	191	208	229	10		2250	
 bRF M	61 1502 0090	bRF M/ 1x90	3.1/8" HCA400	-	89 - 91	137	142	150	10		1539	
	61 1502 0102	bRF M/ 1x102	-	4" HJ11	101 - 103	137	142	162	10		1585	
	61 1502 0115	bRF M/ 1x115	4.1/8" HCA495	-	114 - 116	137	142	175	10		1631	
	61 1502 0132	bRF M/ 1x132	-	5" HJ9 HJ9HP	131 - 134	169	179	192	10		1918	
	61 1502 0147	bRF M/ 1x147	5" HCA550	-	146 - 148	169	179	207	10		1974	
	61 1502 0169	bRF M/ 1x169	6.1/8" HCA618	-	168 - 170	191	201	229	10		2257	

